



南通优睿半导体有限公司

优睿半导体
YOU RUI SEMICONDUCTOR

Address: 江苏省启东市经济开发区南苑西路1188号

名称: SSOP16L(0.635-D140) POD

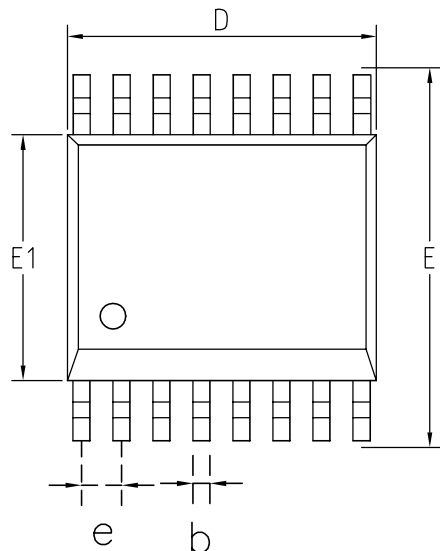
编号: YR-ZZ-ES-026 版本 A/1

DRN: 王磊

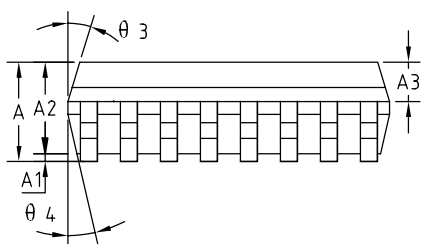
APPD: 许海渐

Date : 2020-8-31

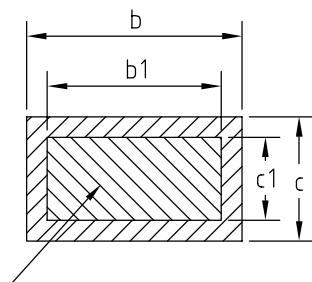
◇ SSOP16L Package Outline Dimensions



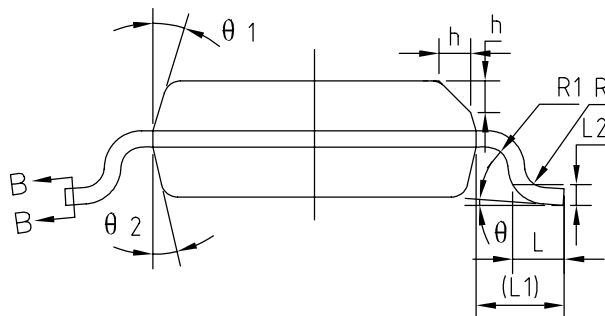
TOP VIEW



SIDE VIEW



BASE METAL



SYMBOL	MIN	NOM	MAX
A	1.35	1.50	1.65
A1	0.05	0.10	0.15
A2	1.35	1.40	1.50
A3	0.50	0.60	0.7
b	0.23	--	0.31
b1	0.22	0.25	0.28
c	0.18	--	0.25
c1	0.17	0.20	0.23
D	4.80	4.90	5.00
e	0.635BSC		
E	5.80	6.00	6.20
E1	3.80	3.90	4.00
L	0.45	0.60	0.80
L1	1.04REF		
L2	0.25BSC		
R	0.07	--	--
R1	0.07	--	--
h	0.30	0.40	0.50
theta	0°	--	8°
theta 1	6°	8°	10°
theta 2	5°	7°	9°
theta 3	6°	8°	10°
theta 4	5°	7°	9°

NOTES:

1. ALL DIMENSIONS REFER TO JEDEC STANDARD MO-137E
2. DIMENSION D DOES NOT INCLUDE MOLD FLASH
3. DIMENSION E1 DOES NOT INCLUDE MOLD FLASH
4. FLASH OR PROTRUSION SHALL NOT EXCEED 0.25mm PER SIDE.