



南通优睿半导体有限公司

优睿半导体
YOURUI SEMICONDUCTOR

Address: 江苏省启东市经济开发区南苑西路1188号

名称:

QSOP24L POD

编号:

YR-ZZ-ES-032

版本

A/1

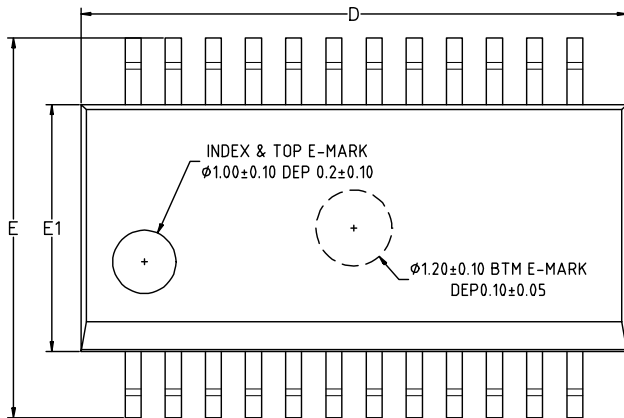
DRN:王磊

APPD:许海渐

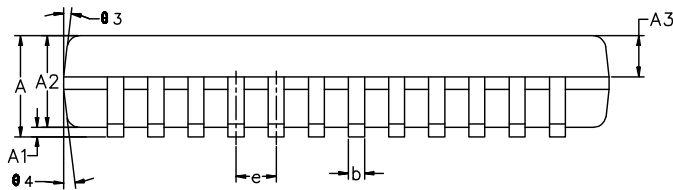
Date:

2020-12-10

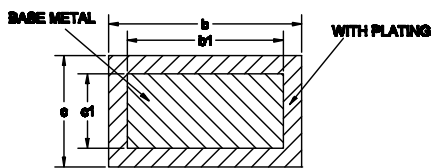
◇QSOP24L POD



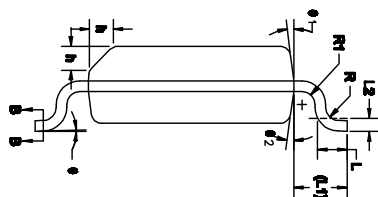
TOP VIEW



SIDE VIEW



SECTION B-B



SYMBOL	MIN	NOM	MAX
A	1.35	1.60	1.75
A1	0.10	0.15	0.20
A2	1.40	1.45	1.5
A3	0.60	0.65	0.70
D	8.60	8.65	8.70
E	5.80	6.00	6.20
E1	3.80	3.90	4.00
e	0.605	0.635	0.665
L	0.50	0.60	0.7
L1	1.05REF		
L2	0.25BSC		
b	0.21	-	0.31
b1	0.22	0.25	0.28
c	0.2	-	0.25
c1	0.19	0.20	0.21
θ	1°	-	6°
θ1	11°	12°	13°
θ2	9°	10°	11°
θ3	11°	12°	13°
θ4	9°	10°	11°
R	0.07	-	-
R1	0.07	-	-
h	0.30	0.40	0.50

NOTES:

1. ALL DIMENSIONS REFER TO JEDEC STANDARD MO-137.
2. DIMENSION D DOES NOT INCLUDE MOLD FLASH
3. DIMENSION E1 DOES NOT INCLUDE MOLD FLASH
4. FLASH OR PROTRUSION SHALL NOT EXCEED 0.25mm PER SIDE.